



**COVERT TACTICAL & TECHNICAL
PRODUCTS**

TABLE OF CONTENTS

COVERT TACTICAL & TECHINICAL PRODUCTS & DESIGN

PRODUCT DESIGN & DEVELOPMENT:

RURAL OPERATIONS:

ELECTRO OPTICS

- Long-range PTZ Camera
- Right Angled Prism Attachment Kit
- Compact Thermal PTZ Cameras
- Compact Pan / Tilt Attachment
- Compact PTZ Cameras
- Ruggedised IP Camera
- Micro Bullet Camera
- Ultra Low-Light Camera

STORE & FORWARD

- OWLv2
- IQS System
- VOLE
- MIDVER

ENCODERS & IN-LINE CONVERTORS

- Analogue - IP
- HD-SDI - IP
- Analogue - USB

PROTECTION

- RATS Ground Sensor System
- STONES Audio Protection System

CONCEALMENT

- Hedgerow Deployment Kit
- Drop Down Concealment Bags
- Scent Distraction Powder
- Deep Fit Camera Tool Kit

ACCESSORY KITS

- M12 Lens & Sensor Kit
- Covert IR Illuminators
- Technical Tripod
- Ops Folders

CUSTOM CONCEALMENTS & MIMICRY

- CAD Digital Printed
- Resin Cast

ASSOCIATES:



URBAN OPERATIONS:

ACCESS & RECONNAISSANCE

Covert Access & Elevation System
Adaptive Target Recce System

PROTECTION

BATS Kit Alpha
BATS Kit Bravo

STILL IMAGERY

MOD Tier 1 full spectrum Kit
DTR IR kit

CONCEALMENT

Sniper / Observer Hide System
Tactical LCD Screen Hood

TECHNICAL OPERATIONS:

COVERT INSTALLATION TOOLS

Microphone Set & Deployment Tool Kit
Reverse Audio Deployment Tool Kit
Audio Long Reach Deployment Tool Kit
Video Deployment Accessories Kit
Camera Set & Cable Accessories Kit
Video Straight Installation Tool Kit
Video Reversed 90 Degree Tool Kit
Video Reversed 20 Degree Tool Kit
Silent Drilling Tool Kit & Equipment

COVERT ENTRY TOOLS

Level 1 Tool Kit
Level 2 Tool Kit
Silent Breaching Tool Kit
By-Pass Kit
Vehicle Tool Kit [Manual entry]

COVERT TACTICAL

Tyre Deflation System [TDS]





DESIGN

TURNING IDEAS INTO PRODUCTS

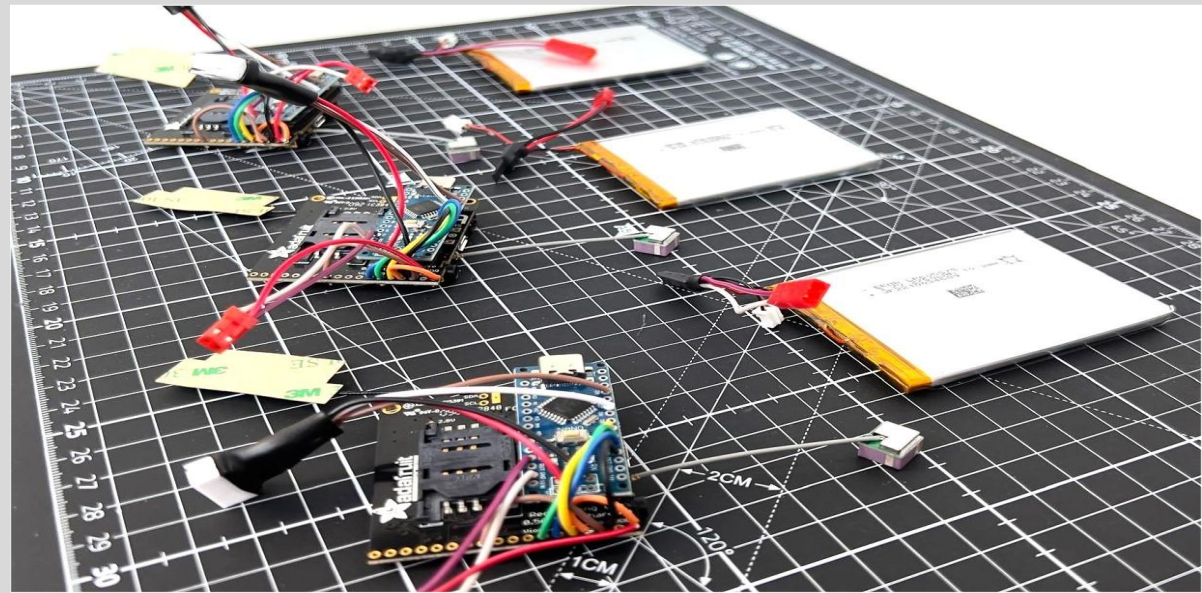
We employ 'area-specific' engineers who turn ideas into products. We have the capability to design and manufacture bespoke client applications from, metals, plastics, and textiles, using both traditional machining techniques and the latest computer-aided design method.

If you have an idea, or an operational requirement but cannot find the solution, why not contact us and see if we can turn it into a real, functioning asset.

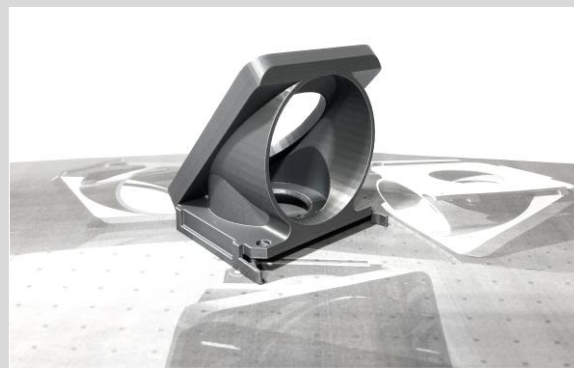
From small 3D printed batches, customised textiles, software development to complexed electronics housed in ruggedised enclosures, our design cell have the experience and knowledge of the design principles to appoint the appropriate manufacturing techniques.

The International Special Training Facility is highly focused on developing tactical and technical products for you, from start to finish, via our own concepts or yours. Our design cell offers rapid prototyping of operational ready products, electronics & equipment.

Our design cell of skilled engineers from industry specific backgrounds with real-time operational support focus, and our end user members of staff, allows us to take a methodical approach ensuring we produce fit-for-purpose solutions for you.



We will work in collaboration with you to create a range of innovative concepts, exploring solutions to identify the most 'fit-for-purpose' solution. Our in-house electronics engineers can develop software capabilities if required, before moving into the detail product phase.



The detailed product phase uses advanced CAD software and 3D modelling confirming the technical specifications are manufacturable.



Finally, we select the product material, colour and finish ensuring it meets all functional & operational requirements, before production.

RURAL OPERATIONS

COVERT TACTICAL & TECHINICAL PRODUCTS & DESIGN

The deployment of Covert Rural Video allows for a longer and safer means to monitor, extract and exploit real-time activity as it happens on the ground.

Deploying our stay-behind recording systems means a smaller physical footprint on the ground, this reduces the risk of compromise, whilst maintaining tactical superiority.

By deploying these stay-behind systems removes the fatigue from operators enabling them to prepare for other phases of the mission while targets are under the continuous watchful eye of our technologies.

With over two thousand successful outdoor covert video deployments across the globe under our belts, we completely understand the complexities of this type of operation, and it's because of our depth of operational knowledge that you can trust, we only support equipment that works.

Our covert video deployment range is structured on a 'modular solution' to support your operational remit, be this in a close, medium or long-range capacity.

We have a proven deployment methodology which is based on 5 key elements, these are:

- Capture
- Store
- Forward
- Protect
- Conceal



Covert Observation Support Group

The COS group is an internal department within ISTF who specialise in an array of technical deployments in rural environments, this department offers our customers real-time operational support and training. To talk directly with the group email: info@istf-co.com

“Zero effect on the natural host environment.....
Maximum effect of target exploitation”





Compact LONG-RANGE PTZ CAMERA

DESCRIPTION:

The Internal Pan & Tilt zoom lens provides the user with a capable long-range camera / lens system in a ruggedized housing.

This unique method of positioning the live view is achieved by precisely moving a matched pair of high precision scanning prisms to provide smooth and near silent operation.

Adopting this method of pan and tilt offers multiple benefits to the end user; the system can be rapidly deployed in hostile or sensitive environments and then be remotely re-directed from a safe location.

As the unit remains stationary throughout its operation, it can be buried in the ground or covertly deployed in a hide, providing a stable mounting platform.

The camera is sealed, and nitrogen purged to prevent water or dust ingress and provide a reliable solution even in harsh environmental conditions.

KEY FEATURES:

- Internal pan / tilt / zoom
- Nitrogen purged to support rural use
- 4K HD camera option
- ICR auto cut filter
- Auto focus
- Digital zoom 12x extended function



SPECIFICATIONS:

- 25-129mm 5x Optical zoom
- Sony Exmor R1 / 2.8 CMOS
- Weight 2.2Kg
- Power 12V DC
- Dimensions 237x80x85mm
- IP65 rated



- Amphenol mil-spec connector
- Standard BNC
- Ruggedised alloy enclosure



Ultra-High Definition (UHD) cameras systems produce exceptionally high-resolution images (4x that of full HD)

RIGHT-ANGLED PRISM ATTACHMENT KIT

DESCRIPTION:

The right-angled prism attachment kit enables the long-range PTZ camera to be deployed vertically which opens new methods of concealment.

The attachment kit has an internal aperture size of 52mm allowing the fitment of various filters, such as polarising, ND and IR to mention a few.

With a removable honeycomb 'kill-flash' adding depth and aiding against sun-glint, to enhance the concealment of the internal mirror further, an extender tube and different nose caps can be attached.

KEY FEATURES:

- Easy fitment
- Aids concealment
- Enhances deploy-ability
- Attachment of filters



The prism kit is a simple push fit with M5 retaining screw that secures the attachment in place.

IN-HOUSE PRODUCT



The extender tube has been designed to accept a variety of filters and honeycombs adding better image quality & concealment.



The full prism attachment kit showing various end caps, extender tube & main prism.

COMPACT INTERNAL PAN & TILT ATTACHMENT

DESCRIPTION:

The Compact Telephoto Internal Pan Tilt Module can be used in conjunction with the complete CT lens range, allowing the user to scan a scene by up to 13°.

This optical pan and tilt is achieved by a unique design utilizing a matched pair of high precision scanning prisms. These are manipulated via DC servo motors to provide smooth and near silent operation. Adopting this method of pan and tilt offers multiple benefits to the end user.

The system can be rapidly deployed in hostile or sensitive environments and then be remotely positioned from a safe location. As the unit remains stationary throughout its operation, it can be buried in the ground, providing a stable mounting platform

The CTIPTM is sealed, and nitrogen purged to prevent water or dust ingress and provide a reliable solution even in harsh environmental conditions.

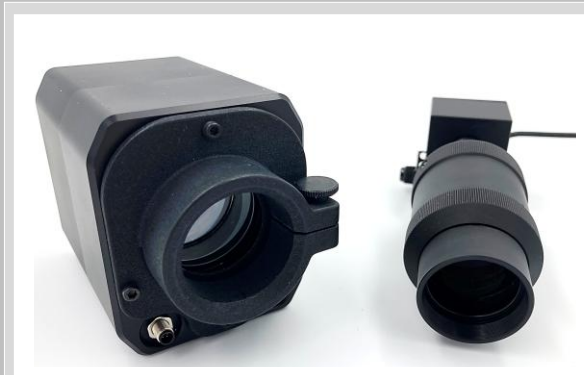
KEY FEATURES:

- Internal pan / tilt system
- Nitrogen purged to support rural use making it sub-surface ready
- Compatible with all CT lenses



SPECIFICATIONS:

- Up to 13° of pan & tilt
- Sealed unit
- Comms mode RS232
- Power 12 V
- Size 100x70x60mm
- IP65 rated



Supplied with adaptors to facilitate fitting any Compact Telephoto Lens. The Lens is attached via a simple clamp and thumb screw.



Example of the CT lens range supplied in our M12 Lens Kits: 20mmHD, 50mmHD, 75mm, 100mmHD, 100mm, 150mm, 250mm

IQS RUGGEDISED COMPACT PTZ CAMERAS

DESCRIPTION:

Our ruggedised compact PTZ cameras have been developed to simplify and support rural deployments used in conjunction with our IQS Hedgerow System. Each camera has been focused on its optimum operating distance, offering evidential 60 mega-pixels.

Ruggedised outer body with an internal skeleton supporting both sensor and lens, eliminating any possible stress and internal movement.

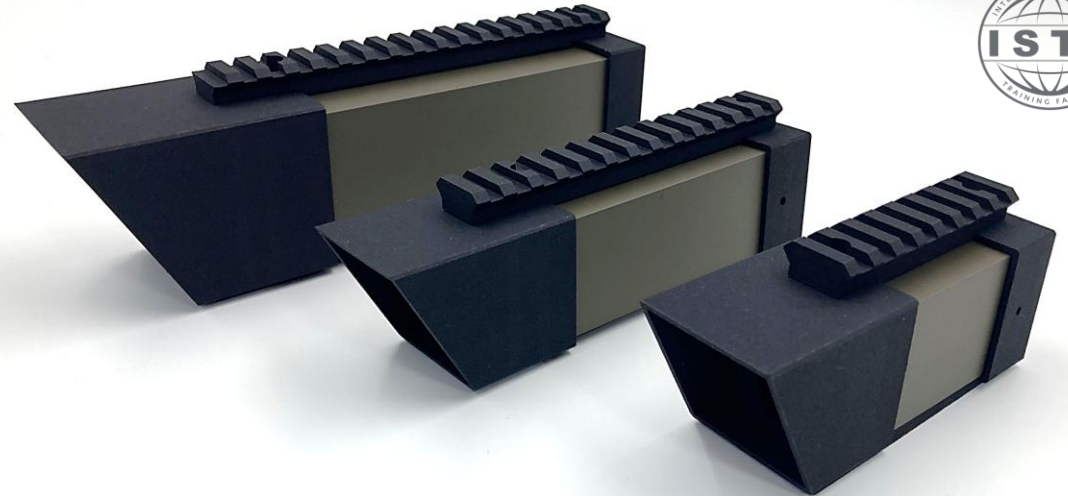
The external fixtures at the front of each camera have been designed with a honeycomb aperture, set back within a sunshade that allows the attachment of different nose cones for greater concealment.

Pression engineered internal cradles offering total support to the camera system enabling heavy-handed sub-surface concealment.

KEY FEATURES:

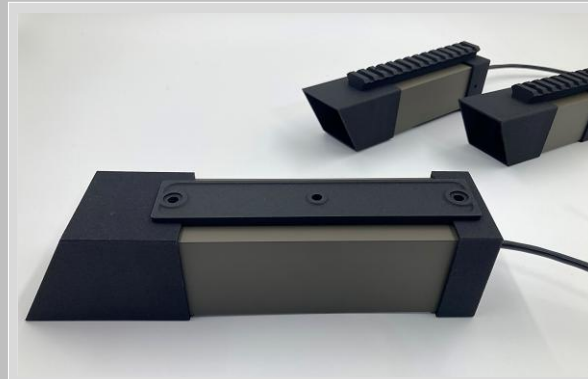
- Internal Pan / Tilt / Zoom [x3]
- Ruggedised enclosure
- Sun disruptor mesh and over handing nose
- Integrated tripod mounts
- Integrated picatinny rail

IN-HOUSE PRODUCT

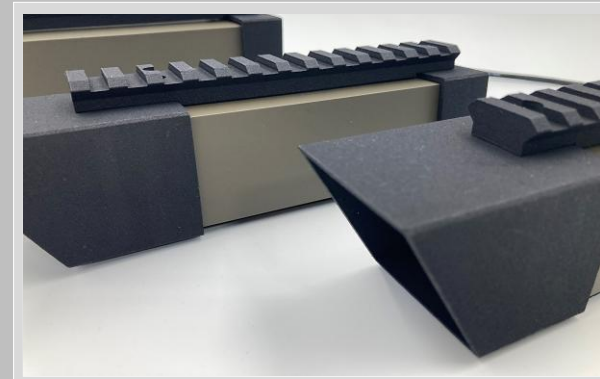


SPECIFICATIONS:

- 100mm lens option
- 150mm lens option
- 250mm lens option
- Power 12V DC
- IP65 rated



Tripod / base plate mounting points positioned on the underside to reduce movement when deployed.



Picatinny mounting rail to support covert alignment lasers, illumination and secondary optics.

OPTIONAL CAMERA OPTICS

DESCRIPTION:

Camera selection is normally dictated by the mission, the environment and the back-end DVR .

To support all missions our optional camera range covers all eventualities.

KEY FEATURES:

- Ruggedised
- Inter-changeable M12 lens fitment
- Operating on 5 - 12 volts



COMPACT HD-IP: 1920X1080p

- Internal storage
- Integrated microphone
- Motion triggers
- Configurable



HD-SDI / CVSB:

- HD colour image
- Switches to mono in low-light
- Ruggedised alloy enclosure



RUGGEDISED MICRO BULLET:

- Various focal lengths
- Dimensions 35mm x 12mm
- Operating voltage 5 ~ 12v
- Potted alloy enclosure



WATEC 3200 ULTRA LOW-LIGHT:

- HD resolution
- Min LUX 0.0001 Max LUX 0.000007 F1.4
- Operating voltage 12v

OWL v2

RUGGEDISED DVR

DESCRIPTION:

The OWL-V2 is our ruggedised long-term stay behind DVR, operating a twin camera set-up allowing the user to control multiple areas of interest simultaneously. The system has inputs for activity alerts and outputs which enables the user to switch third-party devices on, such as our covert illuminators.

With its own internal power cell which safe-guard's settings on a battery change, the OWL-V2 can be in place for any period of time.

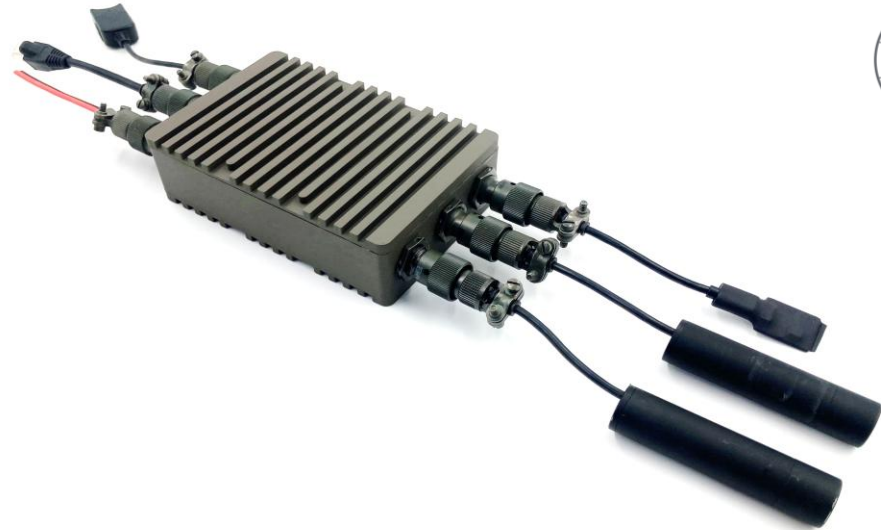
Over the horizon and live view is made possible via the ruggedised dongle, this is enclosure within its own housing which allows the user to select what sim card is required to suit the country or mission in hand.

Communicating with the OWL-V2 is via a secure encrypted Web-Gui and our in-house user interface which has been designed to be user friendly.

KEY FEATURES:

- Two camera channels
- Input - Activation trigger / Activity alert
- Output – switching other devices on
- 3/4G transmission

IN-HOUSE PRODUCT



SPECIFICATIONS:

- | | | |
|--------------------------|--------------------|--------------------|
| • Internal battery | • Internal storage | • Size 135x90x40mm |
| • Data connection in/out | • Power 5V DC | • IP65 rated |

ADMIN:

- Power
- Data
- GSM



TARGET:

- Camera 1
- Camera 2
- Trigger



With the logical format of all target facing features on front face, admin requirements on the rear face making it an in-line system.

Its small ruggedised form factor makes it ideal for sub-surface rural deployments, finished in our custom rural green pigment.

IQS HEDGEROW DVR & PTZ CAMERA SYSTEM

DESCRIPTION:

The IQS allows multiple solid state PTZ cameras to be connected at a single point of control, allowing 360° coverage with no moving parts.

The ATM camera allows operators to pan, tilt and zoom within its 3.1-megapixel field of view. IQS allows four of these cameras to be 'stitched' together to increase the field of view.

The IQS constantly communicates with the attached cameras, when one is about to pan outside of its available range the IQS automatically switches to the next camera in the direction of movement.

Using the ATM cameras makes it particularly suited to vehicle fits, cameras can be concealed behind a 1mm aperture, covering all four sides of the vehicle, giving a 360° pan, 60° tilt and 3x magnification.

The IQS can also be deployed in the rural environment when used in conjunction with our compact PTZ cameras.

KEY FEATURES:

- Creatable 360-degree FoV
- Supports ATM cameras 3x Magnification - 60-degree tilt
- Supports Compact PTZ cameras
- Internal storage
- Low power



SPECIFICATIONS:

- Input resolution 3.1 megapixel
- Comms mode RS232
- Size 80 x 80 x 22mm
- Pelco, Visca protocol
- Power 2.5W
- IP65 rated



- Camera resolution > 2000TVL
- Camera sensitivity <0.1 Lux
- Camera zoom 3x Lossless



The IQS System is supplied with a laser cut laminated sleeve to assist with cable management and added protection.

VOLE SYSTEM

DESCRIPTION:

The VOLE [Video Over Live Extraction] is a ruggedised stay behind cellular hub which enables the end user unlimited transmission range of live target activity via remote access over the 3G/4G & 5G networks.

With its integrated WI-FI capability, the operator on the ground can connect locally via any smart device in order to correctly align the selected camera configuration, once complete the internal WI-FI can be disabled. For covert deployments at close-range to the target, the operator can use the 'hands-free' eye monitor which connects directly to the supplied IP camera.

Its robust design, ensures its suitability for sub-surface concealment in harsh outdoor environments all year round. Developed by end-users who promote an easy to use 'plug & play' functionality makes it ideal for covert teams who operate within high-risk locations where deployment time must be kept to a minimal.

KEY FEATURES:

- Secure 64/128-bit WEP protection
- Advance fire wall features
- Interchangeable SIM access
- IP67 anti-tamper enclosure

IN-HOUSE PRODUCT



SPECIFICATIONS:

- | | | |
|---------------------|--------------------------|-------------------------|
| • 3G / 4G / 5G | • Web interface features | • Size 145 x 110 x 40mm |
| • GPRS / GSM / WIFI | • Protocol Support | • Mil Spec |



The VOLE is supplied with a laser cut laminated sleeve to assist with cable management and added protection.

The rugged enclosure has been designed with a hatch and gasket allowing quick and easy access to the SIM card.

CONTROL & ENCODER SYSTEM

DESCRIPTION:

MIDVER is ideally suited to being deployed in damp or dusty environments due to its weatherproof design.

The web browser interface gives the user access to view and control a suitable device. Video streams can either be watched live or stored via its' on-board memory and replayed or downloaded at a later date.

Designed to be compatible with the ONVIF-S/G protocol standards allows for seamless integration with existing equipment and video management systems such as Milestone™.

Where MIDVER is deployed in remote locations, full control can be achieved by using the VOLE system.

MIDVER is fully compatible with our unique range of intrusive and directed surveillance cameras and lenses.

KEY FEATURES:

- Internal storage 128GB or 256GB
- HD-SDI Video input
- 1920x1080p 25fps/30fps
- 256kbps to 30000kbps bit rate
- Web browsers edge, firefox, chrome



SPECIFICATIONS:

- Pelco D Protocol
- RS232 Physical interface
- POE IEEE802.3af compliant
- Power 12V DC
- Size 89x77x29mm
- IP65 rated



Protective laminated Cordura sleeve available in various colours adding to its survivability.



Velcro loop strips allowing it to be firmly fixed to the VOLE router as one solid package.

ENCODERS & IN-LINE CONVERTORS

DESCRIPTION:

It is not always possible to work with 'plug-&-play' systems, with this in mind we have several encoders and in-line convertors to bridge this gap.

KEY FEATURES:

- On board storage
- Integrated microphones
- Motion trigger capable
- Low power
- Ruggedised



PAL/NTSC > H.264

SPECIFICATIONS:

- Integrated microphone
- Internal storage
- Integrated WIFI point
- Low power
- PoE option
- Rugged construction



HD-SDI > IP

SPECIFICATIONS:

- Integrated microphone
- Configurable output video
- Motion triggers
- Selectable input VR
- Low power
- Rugged construction



IN-LINE CONVERTOR

SPECIFICATIONS:

Inline power convertor designed to work in conjunction with the OWL DVR

- 5V < 12V step up
- PAL > USB encoder

RATS SYSTEM

DESCRIPTION:

The RATS has been developed as an ultra-ruggedised stay behind Trigger / alerting system.

Completely potted with no switches the system comes to life when the end user connects their chosen sensor designed to alert the user of wanted movement or unwanted movement within the chosen deployment site.

The system is supplied with up to four [4] long-range PIR / Radar sensor units terminated on 1.5 meters of cable allowing concealment and elevation if required.

KEY FEATURES:

- Fully seal with internal battery
- Powers up on sensor connection [no switches]
- LORA RF technology
- GSM global forwarding/alerts

IN-HOUSE PRODUCT



SPECIFICATIONS:

- Up to 6 months run time
- Sealed in potting
- Size 110x70x30mm
- 2Km RF range
- RFID / Global repeater unit
- IP67 rated



Supplied sensors

- PIR with IR LED flash warning
- Flat Radar



RFID / GSM Global 4G repeater unit allows the RATS system to deployed as an unmanned stay behind triggering asset.

COVERT IR ILLUMINATORS

940nm – Close Range

DESCRIPTION:

Our close-range Covert IR Illuminators have been designed to offer 3 different styles of covert lighting across the operational area:

- Wide angle flood
- Medium coverage
- Spotlight beam

Housed in lightweight but durable sleeves protecting the fully seal IR LED for maximum protection.

To accompany the illuminators is our low-light sensor switch which can be fitted in-line with no fuss.

KEY FEATURES:

- Compact
- Lightweight
- 940nm
- Multiple lighting options



SPECIFICATIONS:

- | | | |
|--------------------------|------------------------|----------------|
| • Flood range 5 meters | • Spot range 25 meters | • Size 20x60mm |
| • Medium range 10 meters | • Power 12v DC | • IP65 rated |



Produced in our custom rural green pigment and protective cable braid.

Covert illuminator kit supplied in our protective operational utility folder.

M12 COMPACT LENS KIT

DESCRIPTION:

The Medium-range capture kit comprises of colour & monochrome sensors, which are compatible with an array of carefully selected 'fixed' focal lenses specially designed for medium range [50 – 500 meters], outdoor deployments.

These lenses are manufactured with high quality glass allowing greater stand-off distance between glass and aperture increasing their survival rate against search.

Content:

- 20mm HD
- 50mm HD
- 70mm
- 100mm
- 150mm
- 250mm
- 90-degree adapter
- 3D printed concealment nose cones

KEY FEATURES:

- Durable
- Compact
- Compatible with all M12 cameras

IN-HOUSE PRODUCT



SPECIFICATIONS:

- Machined with M12 camera thread
- High quality glass
- Machined alloy bodies
- Padded storage case



The perfect combination of focal lengths to support all medium range covert camera deployments.

M12 Lens kit is supplied in our protective operational utility folder.

TECHNICAL TRIPOD

DESCRIPTION:

Our lightweight technical tripod has been designed to support the compact Long-Range PTZ camera in rural settings.

Its uniquely shaped legs machined from alloy work as individual ground spikes anchoring the tripod in position.

The emphasis when designing the tripod was not height, more so to keep optic in as lower profile as possible.

Supplied with a low-profile slide-mount head.

KEY FEATURES:

- Lightweight
- Uniquely shaped legs
- Low-profile

IN-HOUSE PRODUCT



Produced in our custom rural green pigment to aid concealment from the start.



SPECIFICATIONS:

- Height 340mm
- Weight with head 980g

HEDGEROW DEPLOYMENT KIT

DESCRIPTION:

For many years the hedgerow deployment kit has been the secret weapon of ours, used when concealing covert cameras at close range within a mature and/or overgrown hedge.

Rather than removing vegetation creating sign, the kit allows the operator to build a self-supporting system in which the camera can be positioned and aligned with little effort from the safe side.

The hedgerow deployment kit consists of various straight and angled rods which screw together giving depth and direction, the tripod and ground spikes allow elevation adjustments and stability to the system.

Use: By screwing the rods together and feeding them into the hedge via the supporting tripod allows the operator to stay concealed from view while positioning the camera within the hedge.

KEY FEATURES:

- Gives the technical operator the flexibility when deploying camera systems in thick hedgerows, removing the need to thin them out via cutting and/or working on the target side.



IN-HOUSE PRODUCT



SPECIFICATIONS:

- Fixing tap
- 2x Long rods
- 1x pivot rod
- 1x short rod
- 1x micro tripod head
- 1x clamping rod



Great example of a mature hedgerow in the height of summer.



Hedgerow deployment kit is supplied in our protective operational utility folder.

OPERATIONAL UTILITY FOLDERS

DESCRIPTION:

Made from 1000 denier laminated Cordura means our folders are built to last.

With a verity of internal storage layouts, horizontal, vertical or both. Between the two internal panels is a removeable double sided Velcro loop panel for extra storage capabilities.

Extra features include a removeable ground sheet to reduce ground-sign and/or supporting wet & dry procedures for covert activities.

Our folders are manufactured in-house so we can create a customised Ops folder of any size, with any internal layout to support your requirements.

KEY FEATURES:

- Durable
- Versatile
- Professional



SPECIFICATIONS:

- Mil-spec Cordura laminate
- MPT / Black
- Standard utility elastic layout or bespoke if required
- Removable centre Velcro panel



Standard utility layout with clear windows for item labelling and/or smaller items.



Padded internally for extra protection of items.

DROP DOWN CONCEALMENT BAGS

DESCRIPTION:

Our drop-down bags come in three sizes and are designed as a rapid method to conceal and weather-proof technical devices above or below ground.

The inner bag is made of military grade waterproof nylon open, but sealable at each end, this can then be placed inside its concealment counterpart made from tuff mesh fabric, the mesh enables the user to attach 3D foliage [supplied] enhancing its camouflage even further.

In dry/hot conditions the mesh concealment bag offers shade and airflow to move around the device.

KEY FEATURES:

Sizes:

- Small 20 x 10 cm
- Medium 24 x 15 cm
- Large 35 x 25 cm

IN-HOUSE PRODUCT



Deployed open at both sides as an in-line protective / concealment cover for technical equipment.



Our Drop-Down Concealment Bags offer all year protection.

SCENT DISTRACTION POWDER

DESCRIPTION:

Our scent distraction powder has been developed and proven to safeguard technical deployments within the natural environment.

Our powder aids to disguises human trace scent and that of the ground disturbed when concealing the technical system.

Disturbance scent is at its strongest for around 36 hours before returning to normal, this scent can attract the attention from foraging and domestic animals, which have been known to dig up and damage equipment, which can then lead to a compromise.

KEY FEATURES:

- The powder is non-toxic and does not harm the animal or user in anyway

IN-HOUSE PRODUCT



SPECIFICATIONS:

- 10x scent packets
- 1x scent dispenser
- Storage pouch
- User guide



The perfect solution to protect equipment against domestic K9s on close quarter deployments.

The COS group is an internal department within ISTF who specialise in an array of technical deployments in rural environments, this department offers our customers real-time operational support and training

CUSTOM CONCEALMENTS

DESCRIPTION:

Within our in-house fabrication cell, we can re-create everything from rocks, tree branches, house-hold bricks, discarded fruit and array of urban street furniture including metallic vehicle parts.

By using modern Computer Aided Design [CAD-CON] to 3D scan in detail and print custom enclosures we can rapidly produce an identical substituted for time sensitive operations.

We can supply ready to deploy concealments or if required digital CAD files only enabling the end user to manufacture their own enclosure while deployed in-country.

Our Digital Mimicry fabrication has become so popular that we have created its own internal department known as CAD-CON.

KEY FEATURES:

- Realist texture
- Effective at a 1-meter walk by
- Purpose build internal cradles for equipment



The detailed CAD product phase allows us to create exact camera / microphone mounts and brackets [twin camera / audio / GSM egress]



CAD **CON** is an internal department within ISTF who specialise in the design and manufacture of mimicry & concealed enclosures for all environments, offering a rapid creation service supporting live operations.



From large format prints to miniature stones concealing our NATS devices.
[non-attributable technical solutions]

URBAN OPERATIONS

COVERT TACTICAL & TECHINCAL PRODUCTS & DESIGN

Operating in complexed urban terrain often requires specialist equipment, tools and technical products to safe-guard and to achieve the continuation of covert intelligence.

Target Reconnaissance is the first & fundamental aspect of all intelligence-gathering operations, we provide and design specialist products that supports 'on-target' scenarios from crossing the threshold, to entry point defeat and through the door for detailed mission effect.

Having the right tools and equipment offers the capability to covertly deploy audio and video devices within a target premises and/or vehicle is a must for any intelligence gathering agency, working alongside world class tool makers we provide professional installation equipment.



Urban Hide Concepts

UHC is a sister company within ISTF who specialise in the development and manufacture of concealment products supporting covert observation and snipers.



COVERT ACCESS & ELEVATION SYSTEM

DESCRIPTION:

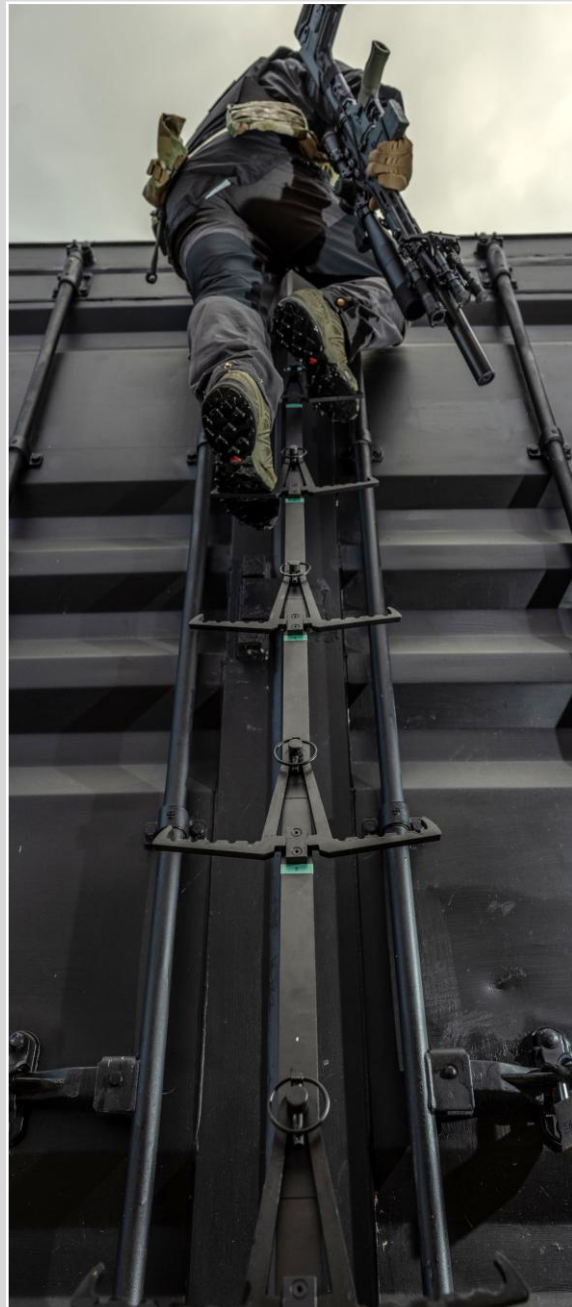
There are many situations where a covert team will have to gain access into a host building, and/or elevation over an obstacle in order to conduct their mission. Be it to covertly climb over a wall, wire security fence or to access the roof space.

Our multi-functional Covert Access & Elevation kit has been developed as a unique rigid ladder utilising individual sections reaching a height of 2.6 meters if required. The rigid ladder collapses into a small manageable package, which can be rapidly assembled on or off location.

The steps of the ladder are removable and designed as covert wire security fence climbers, making our kit super versatile and fit-for-purpose on a multitude of obstacles where elevation is required.

KEY FEATURES:

- Lightweight rigid ladder 2.6meter [rated at 150kgs]
- Covert fence climbing steps
- Flexible webbing ladder – 2 meters
- Weight 5 Kgs



Packaged in a slim-line backpack which when opened creates a drop sheet reducing ground-sign and pressure points in soft ground.

ADAPTIVE TARGET RECCE SYSTEM

DESCRIPTION:

Our adaptive target recce system has been designed after years of conduct on target where a systematic approach to equipment packing and accessibility is always overlooked until now.

The methodology is from entry point to workspace in one easy to follow system.

Located in the main rear sleeve is the CMOE tool kit with built-in work sheet. Supplied with or without tools.

Top left pouch contains the 'wet & dry' reception kit: ground sheet, PPE, securing kit.

Top right pouch contains the workspace requirements: lightweight window drops with fixing kit.

Main pouch holds our expandable tool kit containing: IR Camera & torch, thermal scope, laser measure, marker kit, note pad and pen, tape measure.

KEY FEATURES:

- Ensures systematic approach
- Robust 1000 denier laminated Cordura
- Compact system
- Adaptable



IN-HOUSE PRODUCT



SPECIFICATIONS:

- Slim backpack with civilian cover
- 2x 1.5x1.5-meter drops
- Weight 3Kgs
- 1000 denier laminated Cordura
- Securing kit



Our unique expandable tool pouch offering an all-in-one op's kit within the operators panel.

CMOE tool folder with built-in work sheet, this clever op's folder offers vast storage capabilities for tools and equipment.

OPERATORS LEVEL 1 CMOE KIT

DESCRIPTION:

Our Level 1 CMOE kit is supplied in our expandable tool pouch, the content has been carefully selected to match our Level 1 training program designed to defeat 80% of domestic locks found on target.

Content:

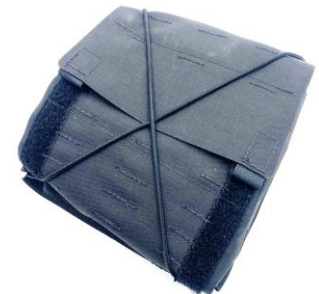
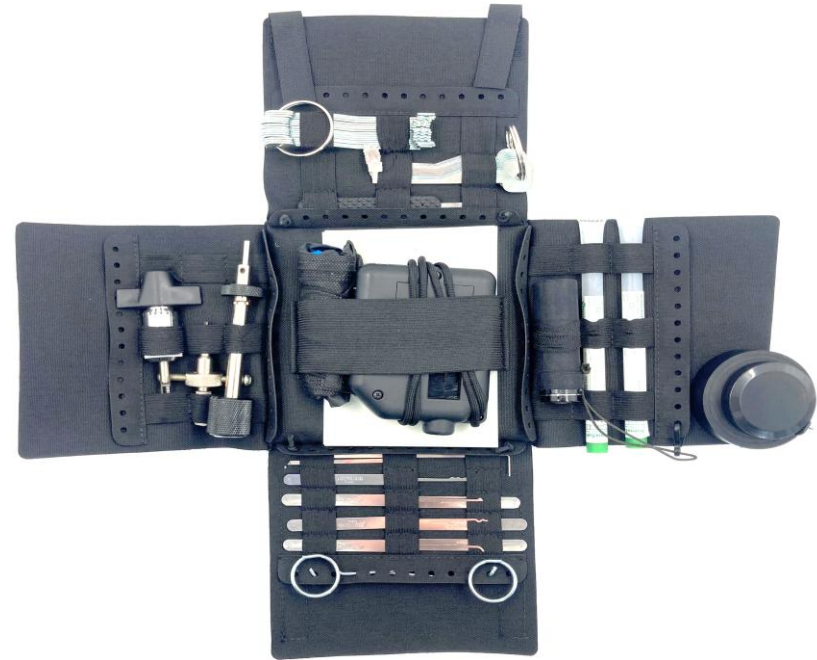
- Cylinder pick set
- Key turners
- Rattler keys
- Union lock picks
- Plug spinner
- Slim knife
- Mica
- Pad lock shims
- PPE kit
- Key reader
- UV torch
- SSE swobs
- Tape & measure

Level 2 High Security CMOE kits also available in similar format.

KEY FEATURES:

- Compact
- Operationally streamlined
- Adaptable

IN-HOUSE PRODUCT



Our expandable tool pouch has secure Velcro fastenings, this allows the user to compress the kit as much as possible for storage.

When on target the expandable tool pouch is held closed using the cross-over shock cord eliminating Velcro compromise.

MOD FULL SPECTRUM CANON R6 MK2 KIT

DESCRIPTION:

Based around the Canon R6 MK2 mirrorless camera is the full spectrum camera designed for covert activities that require the operator to work in a multitoned of spectrums.

A current major consideration for using the mirrorless R6 is that it is laser to eye friendly.

Functioning with Canons EF lenses the R6 body uses a coupling attachment which cleverly houses the particular filter required for the mission, these filters simply slide in & out.

With many user-friendly settings this system can simply be set for day light, low-light & no light operations removing the ever-present skill fade.

This specially converted camera is not available to the civilian market and the kit content is scalable. Contact us for all options.

KEY FEATURES:

- Full spectrum
- Workable in digitally denied environments
- Laser to eye safe



SPECIFICATIONS:

- 1 – 40c & 85% or less humidity
- 21.4 megapixels
- Weight 680g
- Sensor 35.9x23.9mm CMOS
- Programmable settings



Above: Demonstrating the image effect as the filter is partially removed.



This specially converted camera is not available to the civilian market and the kit content is scalable. Contact us for all options.

COVERT IR CONVERSION

DESCRIPTION:

Using the Canon EOS R50 compact body with a full Covert IR Conversion we can offer a highly capable product.

The focus lamp has been adapted to work in extremely low light situations, with the built-in flash also been converted to operate at 940nm.

As standard we supply the covert conversion with an 18-45mm lens and 35mm lens, these are removable and can be swapped with other lenses to suit the mission.

KEY FEATURES:

- Full 940nm conversion
- Interchangeable lenses
- 25.5MP



SPECIFICATIONS:

- Sensor 22.3 x 14.9mm CMOS
- LCD & Viewfinder
- 25.5MP
- Weight 329g



Images can be re-viewed via the LCD screen or conventional viewfinder



18 – 45mm lens
35mm lens

BATS URBAN SENSOR KIT - ALPHA & BRAVO

DESCRIPTION:

Our Tactical Motion Sensor Kits have been designed as a wireless defensive and/or offensive force multiplying product to support covert activities.

In the defensive role the sensors can be used as a force protection system deployed at entry/exit points, areas of dead ground [blind spots] and other vulnerable points to act as an early warning system of unwanted activity close to the hide location.

When deployed in an offensive manner, they can give the hide team a technical trigger of the target's movements. This advanced warning means the team can prepare themselves and equipment ready for the target's appearance.

The sensors operate on a low RF frequency band which gives them an incredible transmission range of up to 800 meters line of sight, more than capable of penetrating walls although reducing the signal range can be deployed at street level.

KEY FEATURES:

- The pocket-sized receiver gives the user 3 types of alerts, visual via numbered LED's indicating which sensor has been activated, audible into an earpiece and vibration for a more covert use.



PIR SENSOR KIT ALPHA



PRESURE & RADAR SENSOR KIT BRAVO

SNIPER / OBSERVER HIDE SYSTEM

DESCRIPTION:

Constructed of lightweight military grade mesh fabric, the sniper window box hide is a rapid deployable three-dimensional system, that when positioned against any window on the internal side, creates an instant one-way visual barrier from the outside looking in, offering total concealment to the user from the very beginning, allowing them to maintain total visual dominance.

Allows multiple optics/weapon systems to be used from different angles covering an extensive field of view at any one time

Designed to create a natural void between window and user, this void removes the visual disturbance created by flat screens pushing against window decorations.

Reduces the risk of sun-light reflection / street level bounce back by 85%.

KEY FEATURES:

- Lightweight & modular
- Multiple hide configurations
- Vehicle deployable
- Only one of its kind



SPECIFICATIONS:

- Air cooling fabric technology
- 1.5 x 1.5 x 1.5m in size
- Removable inner mesh
- Self-supporting
- Basic weight 1Kg



Designed to offer the user depth and security within the building while containing visual dominance.



Vehicle deployment ready, the system can be rapidly constructed within a medium sized van offering a concealed platform in seconds.

TACTICAL LCD SCREEN HOOD

DESCRIPTION:

When collecting imagery in low-light situations, the risk of compromise via LCD screen illumination onto the operator's face is a real threat.

We know firsthand how dangerous light pollution within a concealed location can be. To reduce this threat our Tactical Screen Hood Kit is a real-life saving product.

When in a 'static observation post role' where live view video mode is required for sustained periods, while capturing real time activity, our tactical screen hood can be attached to the camera body, then adjusted and positioned over the LCD screen acting as a fully focusable light-proof view finder.

To further reduce seeping light pollution from the cameras function screen and other various LED lights, our heavy-duty fabric camera body shroud can be fitted.

KEY FEATURES:

- Our tactical screen hood can also be deployed on target reconnaissance missions, offering greater concealment to the operator when checking their low-light imagery



SPECIFICATIONS:

- Adjustable viewfinder
- Robust support bracket
- Rubber eye cup
- Fabric head shroud



The tactical LCD screen hood attaches to the camera bodies hot shoe, locked in place with the adjustable locking washer.



When not in use, simply push down on the locking catch and the system simply hinges up out of the way.

TYRE DEFLATION SYSTEM [TDS]

DESCRIPTION:

The tyre deflation system is designed to safely and controllably deflate vehicle tyres when commanded to via an RF signal.

The system can be deployed as a single unit to deflate one tyre or in combination with other receiver modules for additional tyre deflations and effects.

A special tyre valve cap and associated electronics is fitted to the wheel hub assembly to allow the deflation to be initiated.

A typical tyre deflation takes approximately 120 seconds and would trigger a low-pressure warning sensor within 10 seconds if a Tyre Pressure Monitoring System is fitted to the target vehicle.

KEY FEATURES:

- Tactical storage sleeve
- Handheld RF trigger
- Reusable receiver modules



SPECIFICATIONS:

- Operating Frequency: 868Mhz
- RF TX Power: +22dBm/158mw
- LoRa Range: 1km LoS
- Power: 125 hours of standby
- Speed Rated: >70mph or 112kph



The hand controller provides a telemetry link to connected devices for real-time feedback of the health and activation of remote devices.



The receiver module is designed and configured to be as small as possible allowing it to be fitted behind the centre hub cap.

NEW PRODUCT COMING

DESCRIPTION:

This page will be occupied with the next new product

KEY FEATURES:

SPECIFICATIONS:

COVERT AUDIO & VIDEO TECHNICAL OPERATIONS

COVERT TACTICAL & TECHINCAL PRODUCTS & DESIGN

Having the ability to covertly deploy audio and video devices within a target premises and/or vehicle is a must for any intelligence gathering agency.

This skill set allows the gathering of 'behind closed door' activity and intelligence in situations where conventional surveillance techniques are not possible.

Technical installations are a key phase to the continual evolution of the intelligence picture.



ISTF are the UK distributor and training pattern of CAMINOS.

"Some wall's do have eyes & ears"



COVERT INSTALLATION TOOLS



MICROPHONE SET & DEPLOYMENT TOOL KIT

SPECIFICATIONS:

4x microphones	1x extension 3m	1x hand tool
1x microphone tester	1x extension 5m	1x puffer
1x headset	1x fast glue gel	1x spare pins
1x extension 1m	1x plasteline	1x storage case



REVERSE AUDIO DEPLOYMENT TOOL KIT

SPECIFICATIONS:

1x pin tool	1x reversed install tool
1x reversed drill	1x spare pins
1x knurled hex knob	1x reversed install tool
1x reverse puffer	1x storage case



AUDIO LONG REACH DEPLOYMENT TOOL KIT

SPECIFICATIONS:

1x short probe	1x slotted bayonet tubes	1x spare pins
1x shore retractor	1x shafts + cutter + hex + stop	1x storage case
1x short mic placement tool	1x puffer	
1x 10mm wedge	1x hex 10mm drill bit	



CAMERA SET & CABLE ACCESSORIES KIT

SPECIFICATIONS:

2x V7A_P_3 Cameras	1x V14 5m extension
2x V7B_P_6 Cameras	1x storage case
1x V12 1m extension	
1x V13 3m extension	



CAMINOS
Tools, Equipment & Training

Certified Training Partner



VIDEO REVERSED 90 DEGREE TOOL KIT

SPECIFICATIONS:

1x reverse 90 cutter	1x retractor	1x knurled hex knob
1x reverse 90 install tool	1x video guide	1x cutter stops -10 -12 -13
1x reverse puffer	1x swivel pin short	1x accessories Allen key 3mm
1x PIN tool	1x swivel pin long	1x spare pin and retractor
10x spring and nut	1x storage case	1x GB4-B-SL-GB-RH-REV-90



VIDEO REVERSED 20 DEGREE TOOL KIT

SPECIFICATIONS:

1x reverse 20 cutter	1x retractor	1x knurled hex knob
1x reverse 20 install tool	1x video guide	1x cutter stops -10 -12 -13
1x reverse puffer	1x swivel pin short	1x accessories Allen key 3mm
1x PIN tool	1x swivel pin long	1x spare pin and retractor
10x spring and nut	1x storage case	1x GB4-C-SL-GB-RH-REV-20L



VIDEO STRAIGHT INSTALLATION TOOL KIT

SPECIFICATIONS:

1x straight cutter	Glue brackets:	1X GB8-SL-GB-RH-STR-10
1x pin tool	1x GB1-SL-GB-RH-STR	1X GB9-SL-GB-RH-STR-10R
1x retractor	1X GB2-SL-GB-RH-SM	1X GB10-SL-GB-RH-STR-10L
1x straight install tool	1X GB5C-SL-GB-RH-VA	1XGB11-SL-GB-RH-STR-15U
1x puffer	1X GB5D-SL-MAG-RH-VA	1X storage case
1x spare pin & retractor	1X GB7A-SL-GB-RH-STR-20D	
10x spring & nuts	1X GB7B-SL-GB-RH-STR-15D	

LOW NOISE DRILLING KIT

DESCRIPTION:

The drill's slow motor has an adjustable speed from 0-75rpm. The fast motor is 1500rpm. A 10mm keyless chuck enables the use of other 'dry' drill bits and pin holing tools.

An innovative 'Auto-Push' device relieves the operator and provides an accurate and consistent driving force of 50 newtons (5 kgs) to the drill.

For main hole drilling, special 10mm diameter thin-wall core drill bits are supplied.

For pinhole drilling, the kit includes a 1mm drill holder attachment (and 1mm drill bits) that are used with the supplied extension tubes.

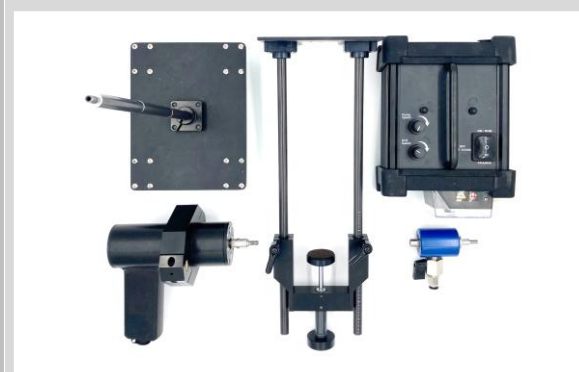
The typical sound level from the entire system 'slow' drilling concrete with water, at ~35rpm is 39-42db

KEY FEATURES:

- No wall anchors required
- Unique auto push
- Super smooth action
- Key-less chuck

SPECIFICATIONS:

- Custom made 12VDC motors with super-quiet gear box, 0-75rpm adjustable speed or 1500rpm fast drill. 7.5Nm (Max) torque
- Typical run time (drill and pump) 5 hours.



The drill smoothly glides along the shafts using the latest technology linear bearings which means near silent action.



Supplied in a ruggedised storage case ready to use.

NEW PRODUCT COMING

DESCRIPTION:

This page will be occupied with the next new product

KEY FEATURES:

SPECIFICATIONS:



CONTACT:

info@istf-co.com

+44 [0] 1981 240 366

www.istf-co.com

Hereford UK
